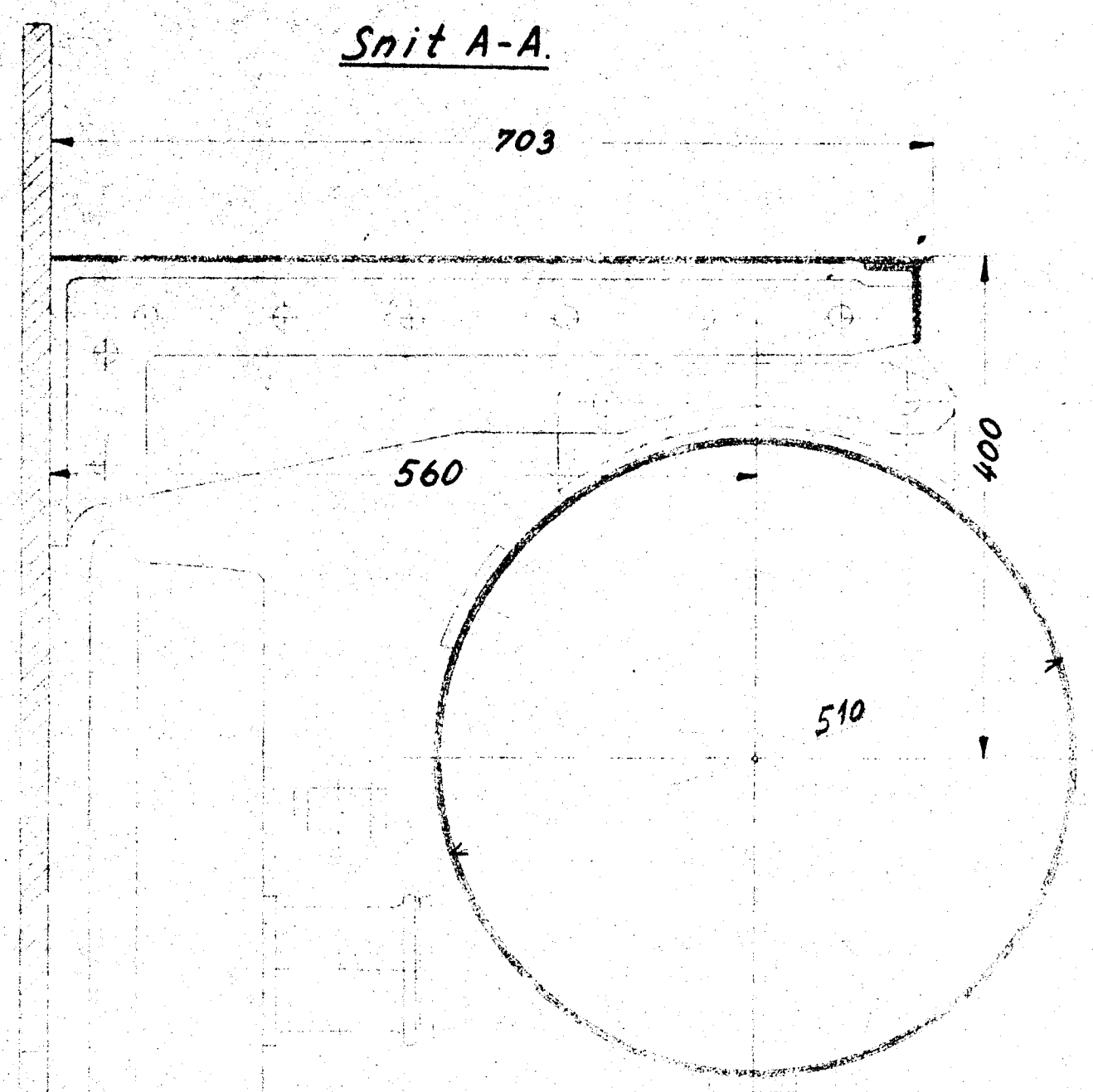
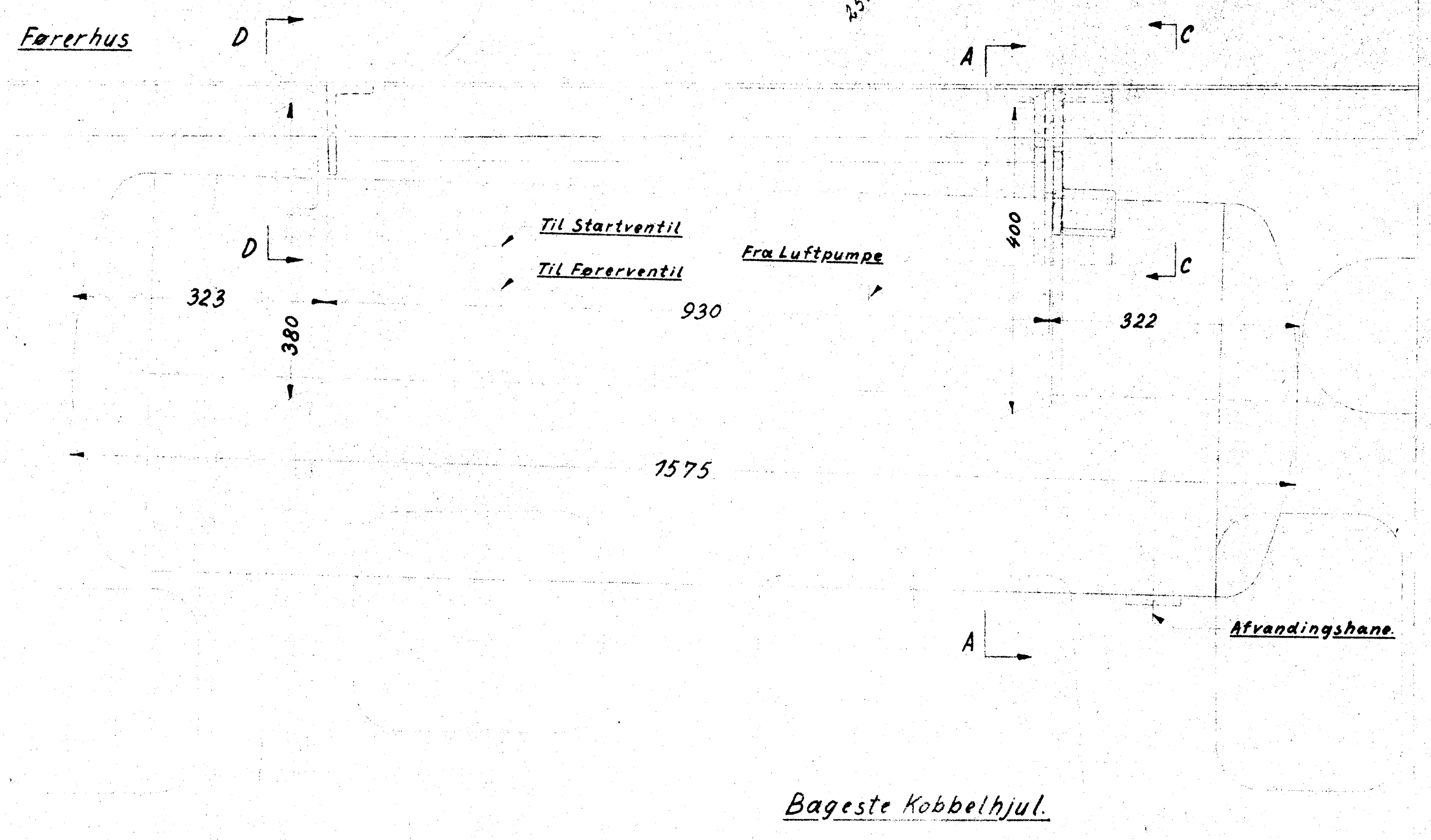
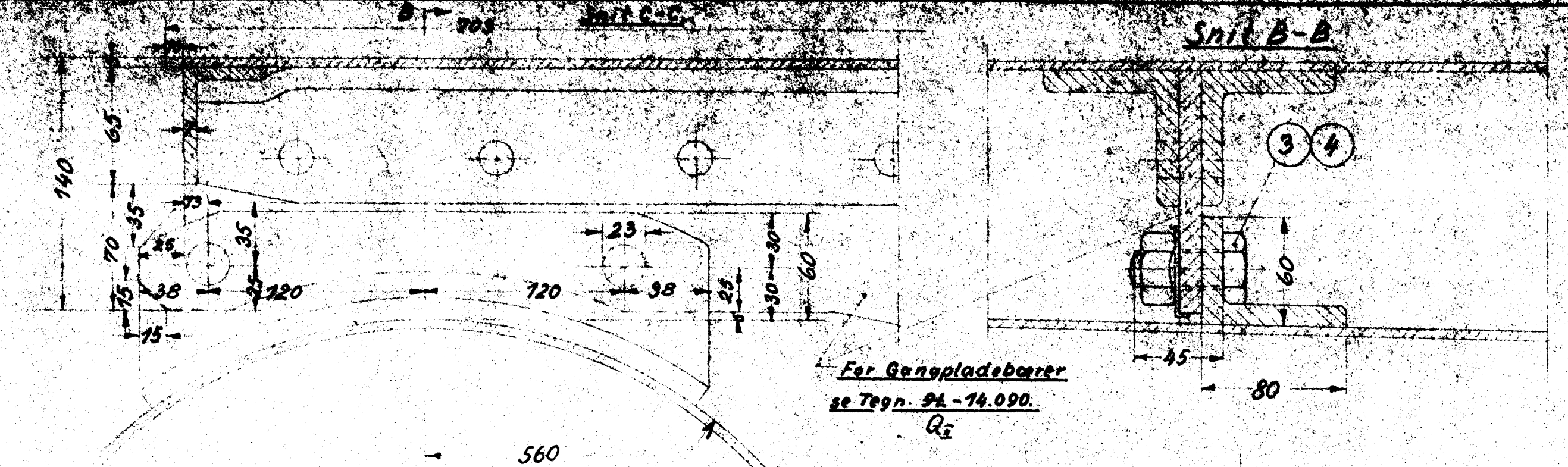
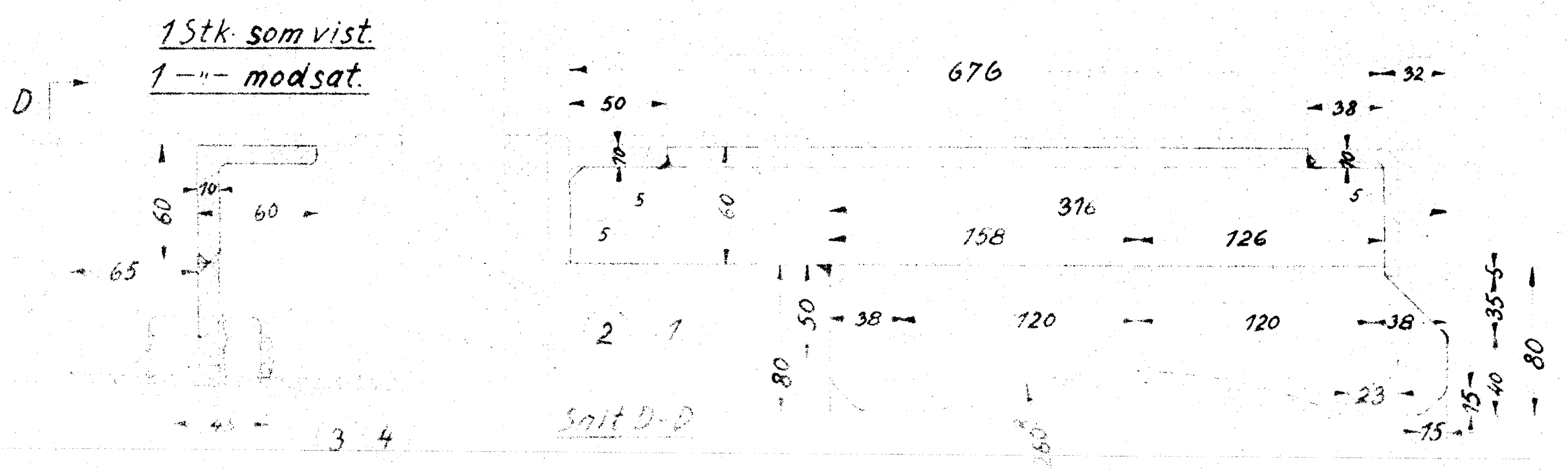


81045.

- | | | | |
|----------------|-------------------------|---|------------|
| 2 Plade | 1stk højre
1 venstre | 1 | Flussj |
| 2 Vinkeljern | 1stk højre
1 venstre | 2 | L 60x60x10 |
| 8 Bolt | M/Motr. 3/4" x 45 | 3 | Magasin |
| 8 Sikringsblik | 3/4" x 1 | 4 | |



Højre Side vist.
Paa venstre Side
anbringes Behol-
deren med Afvan-
dingshanen nær-
mest bageste Puf-
ferplanke.



Q: Ophængning ændret 14/3-41 J.B.

Tegn. A/s Frichs
1:5 Nr. 9L-22.570a
Indr.
1:2,5 Dato
Ophængning af Hovedluftbeholdere Q 22.570
D. Tenderloko. Litra Q